

FHL

- Zones 1, 2, 21, 22
- Integrated electronic ballast
- Power supply 24 V DC
- Compact 24/36 W fluorescent tube
- Degree of protection IP66

*Guard in
stainless steel*

*Body in
aluminium*

*Polycarbonate
tube*

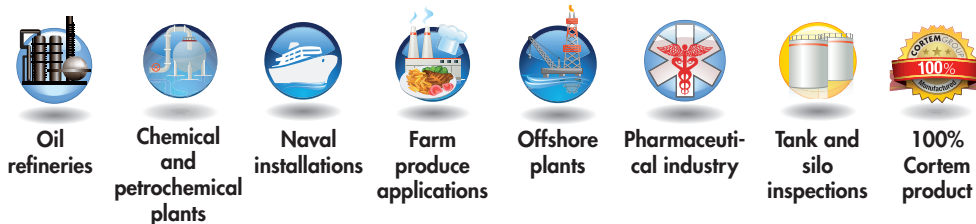
*Suitable for 4-pin
fluorescent tubes*

Stainless steel hook

FHL series Portable inspection lamp

FHL series portable inspection lamps for compact 24/36 Watt fluorescent tubes have been specifically designed for carrying out inspection and maintenance work in all areas that are potentially explosive due to the presence of gases and dusts such as in the petrochemical industry, off-shore installations, tank control and processing areas. Thanks to their robust construction, they are easily handled and have a high degree of protection and optimal performance. They are also used in the naval sector for inspecting engine rooms and in the farming industry for checking the inside of silos. In general, these lamps are ideal for any application calling for a reliable source of light. Thanks also to the accessories which these lamps are fitted, they can be used in a wide variety of ways furthermore, thanks to the energy saving Philips master PL fluorescent tubes, the FHL series also provides an excellent colour rendering index in any position and operating temperature.

Application sectors:

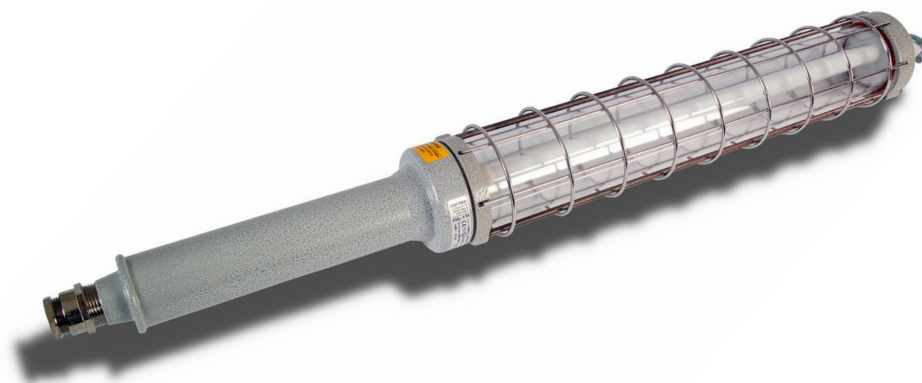


CERTIFICATION DATA

Classification::	Group II	Category 2GD		
Installation:	zone 1 - zone 2 (Gas)	zone 21 - zone 22 (Dust)		
Marking:	CE 0722 Ex II 2GD Ex e mb IIC T.. Gb - Ex tb IIIC T..°C Db IP66			
Certification:	ATEX	CESI 09 ATEX 041X		
Standards:	CENELEC EN60079-0:2009, EN60079-1:2007, EN60079-31:2009, EN60598-1:2008+A1:2009, EN60598-2-8:2012, EN61547:2009 and EUROPEAN DIRECTIVE 2014/34/UE European Directive 2006/95 Low voltage European Directive 2004/108 Electromagnetic compatibility European Directive 2003/108 WEEE Waste electrical and electronic equipment European Directive 2011/64 RoHS			
Class temperature:	85°C (T6)			
Ambient temperature:	-40°C +50°C			
Degree of protection:	IP66			



FHL series Portable inspection lamp



ORIGINAL PRODUCT

MECHANICAL FEATURES

Handle and heads:	Low copper content aluminium alloy
External tube:	Polycarbonate with excellent transparency and brilliance characteristics (in the visible light field with wavelengths of between 400 and 700µm, the uniform transmission is of about 89%). Exceptional shock and UV resistance, flame retardant.
Seal:	Silicone resin between the aluminium heads and the polycarbonate tube
Guard:	Electro-polished 316L stainless steel.
Gaskets:	Acid, hydrocarbon and high temperature resistant silicone
Bolts and screws:	Stainless steel
Hook:	Stainless steel
Entries:	1 x 1/2" NPT entry. Lighting fixture complete with NAV1NB cable gland for non-armoured cable
Coating:	Polyester coating Ral 7035 (Light grey)
Corrosion Resistance:	The STANDARD of the aluminium alloy used by Cortem has passed the tests required by standards EN60068-2-30 (hot/humid cycles) and EN60068-2-11 (salt mist tests)

ELECTRICAL FEATURES

Lamp holder:	2G11 (4-pins)
Ballast:	Electronic, installed in the handle
Rated voltage:	24 Vdc
Connection:	Direct to the connectors fixed on the electronic board L, N, Pe max section 2.5 mm ²
Wiring:	Silicone rubber cables with glass braid protection against high temperatures

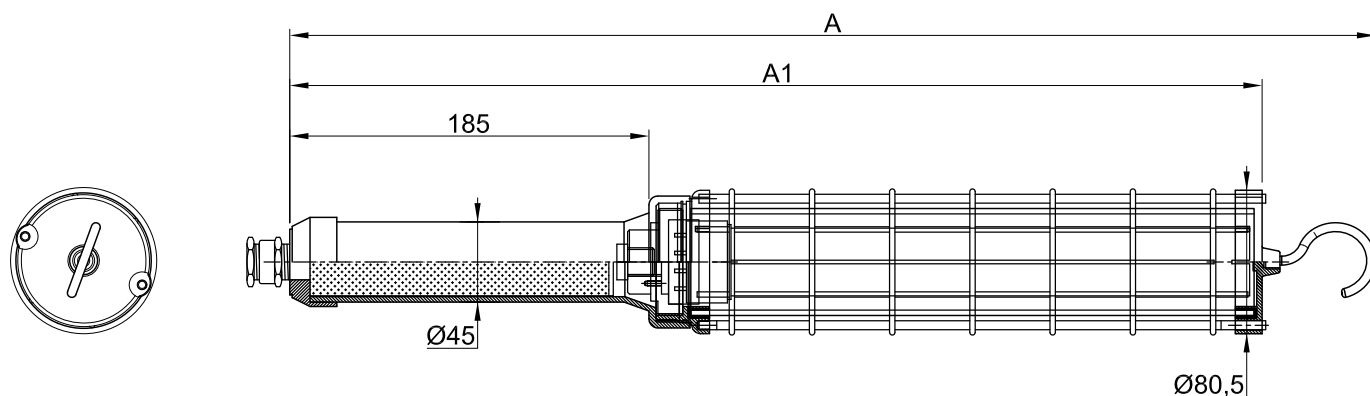
ACCESSORIES AVAILABLE / SPECIAL REQUESTS

Compact 4 pin PL-L 24W fluorescent lamp for FHL-124 or PL-L36W for FHL-136
 Eyebolt internal Ø 20mm
 Protective reflector
 Base for vertical use
 Magnetic mounting
 Cable winder (14 metres)
 Portable lamp complete with 5m of 3x1.5mm² cable and Cortem plug model SPY (Code FHL-124C5 and FHL-136C5)
 GAS UNI ISO 7/1 thread

FHL series selection chart

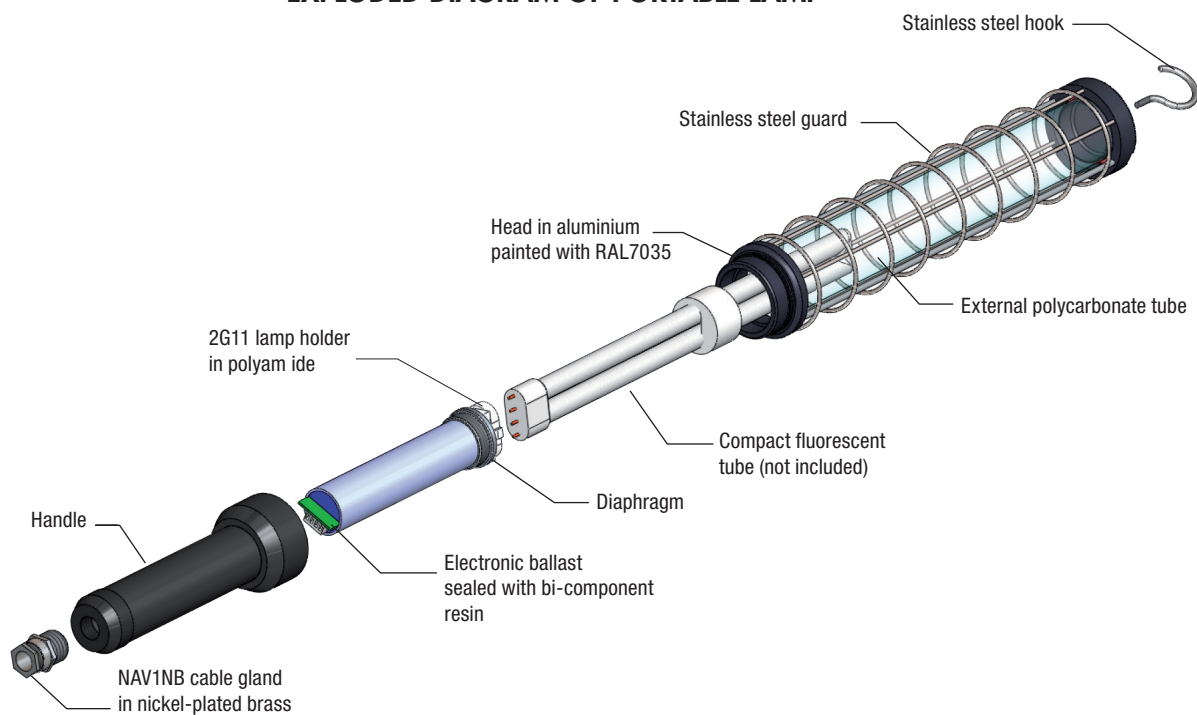
Code	Dimensions mm		Lamp n°	Power supply	Watt	Class T.a. +50°C	Max. surface temp. °C	Weight kg
	A	A1						
FHL-124	622	544	1	24 Vdc	24	T6	79,1	1.30
FHL-136	713	638	1	24 Vdc	36	T6	79,1	1.50

DIMENSIONAL DRAWING



Dimensions in mm

EXPLODED DIAGRAM OF PORTABLE LAMP



DON'T FORGET TO ORDER THE ACCESSORIES

Example: Type of lighting fixture
FHL-124

Fluorescent tubes
LAMP-PLL24W

Protective reflector
G24-669

Eyebolt
GOF-8

+ other...see key

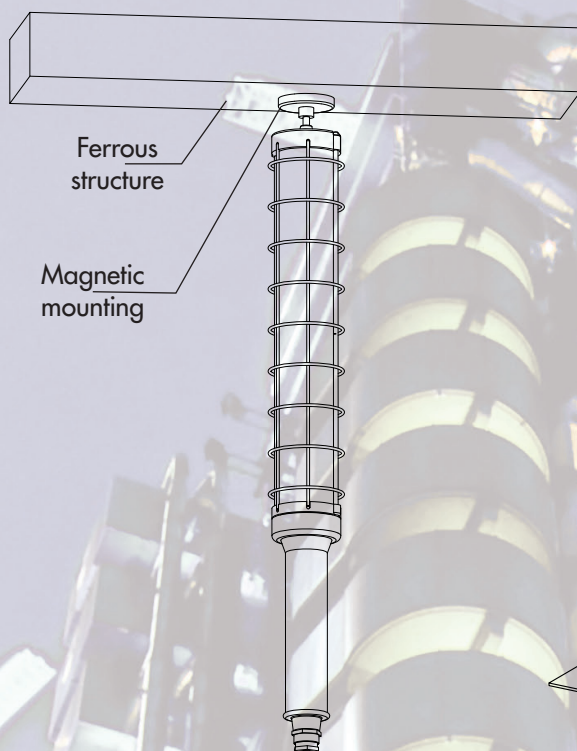


FHL series Accessories and spare parts available on request

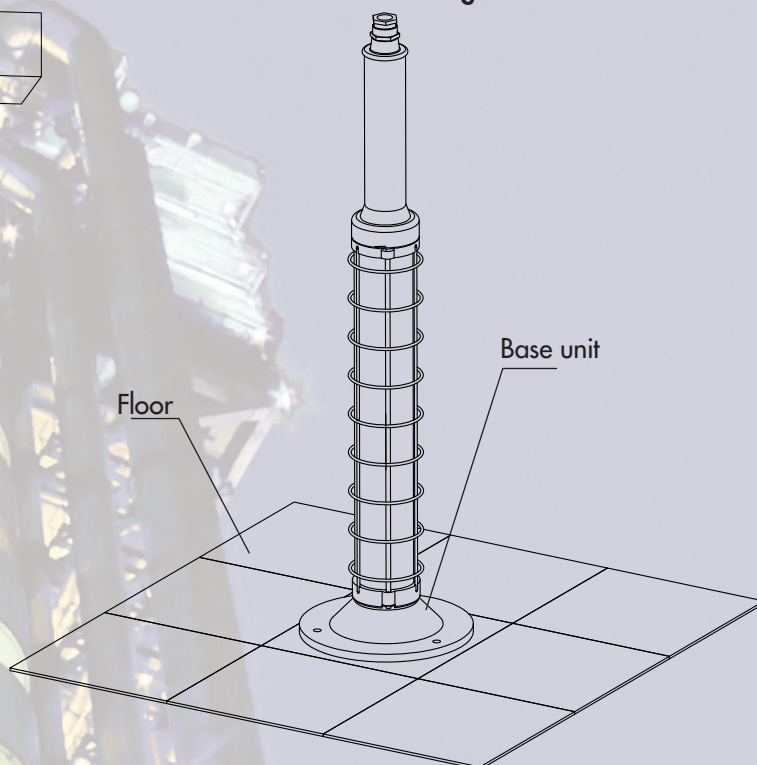
ILLUSTRATION	DESCRIPTION	MODEL	FEATURES	CODE	KEY
	Compact fluorescent tube	24 W	1800 lm (FSD24W)	LAMP-PLL24W	 
		36 W	2900 lm (FSD36W)	LAMP-PLL36W	
	Base for vertical use	FHL-124 FHL-136	Material: white RAL 7035 paint	G-161	 
	Permanent magnet for pendant or horizontal mounting	FHL-124 FHL-136	Material: round 63x14 magnet, traction 320N	FTN-32	 
	Eyebolt internal Ø20 mm	FHL-124 FHL-136	Material: galvanised steel	GOF-8	 
	Protective reflector	FHL-124	Material: white painted aluminium	G24-669	 
		FHL-136		G36-669	
	Automatic wall-mounted spring-loaded cable winder Attention: the cable winder can only be used in safe areas	FHL-124 FHL-136	Alluminium cable winder body with IP65 degree of protection Stainless steel support bracket Cable length - 23 metres	ZECA6189PRCIP65	 
	Electronic ballast sealed with sparkproof of two-part resin	FHL-124	24 Vdc	G24-0558	
		FHL-136		G36-0558	
	Hook	FHL-124 FHL-136	Material: stainless steel	HOOK-M8	
	Cable gland		For models and codes, visit www.cortemgroup.com	NAV1NB	

Installation and mounting methods FHL series

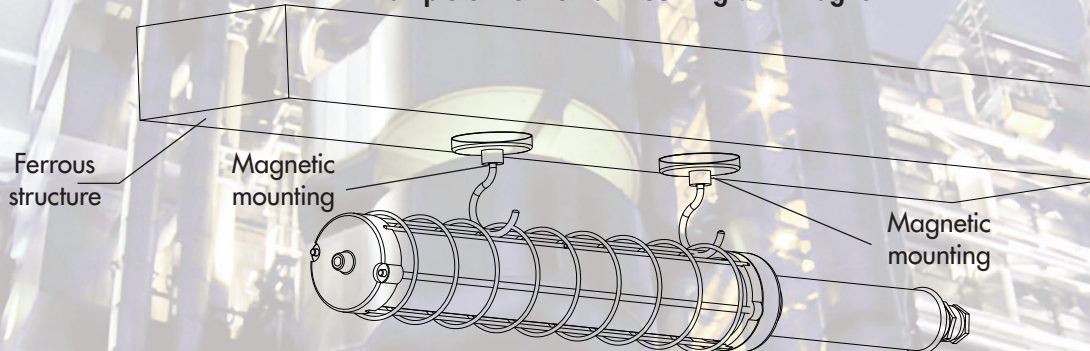
Example of pendant mounting with magnet



Example of the base being used for vertical mounting



Example of horizontal mounting with magnet



Protective reflector mounting system

Reflector in white painted aluminium to protect from dazzling

